

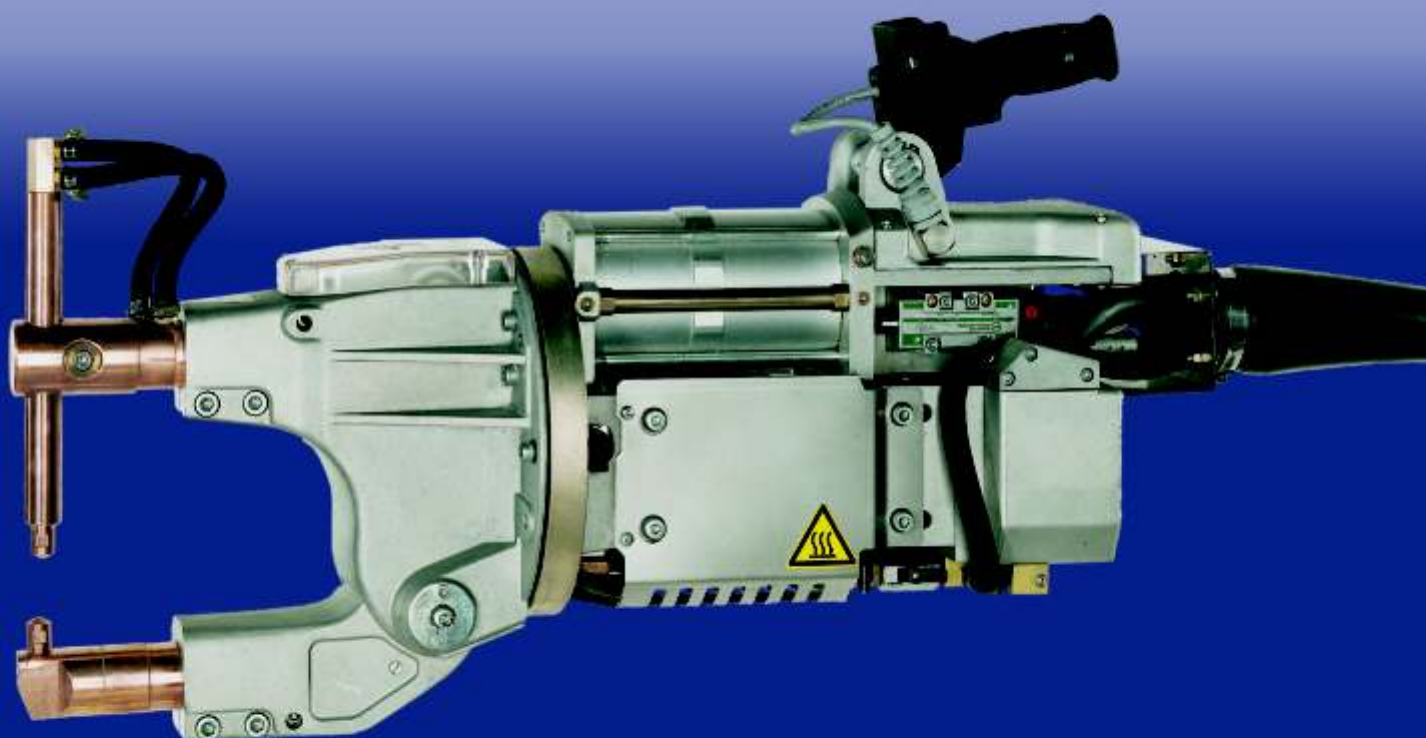
TECNA®

S.p.A. - Via Grieco, 25/27 - 40024 - Castel S. Pietro Terme - Bologna (Italy)
Pho. +39.051.6954400 - Tel. 051.6954410 - Fax +39.051.6954490
<http://www.tecna.net> - E-mail: sales@tecna.net - vendite@tecna.net

 PUNTATRICI PENSILI PNEUMATICHE DA PRODUZIONE A MEDIA FREQUENZA

 MEDIUM FREQUENCY, AIR OPERATED PRODUCTION SPOT WELDING GUNS

 MITTELFREQUENZ - PNEUMATISCHE PRODUKTIONS - PUNKTSCHWEISSZANGEN

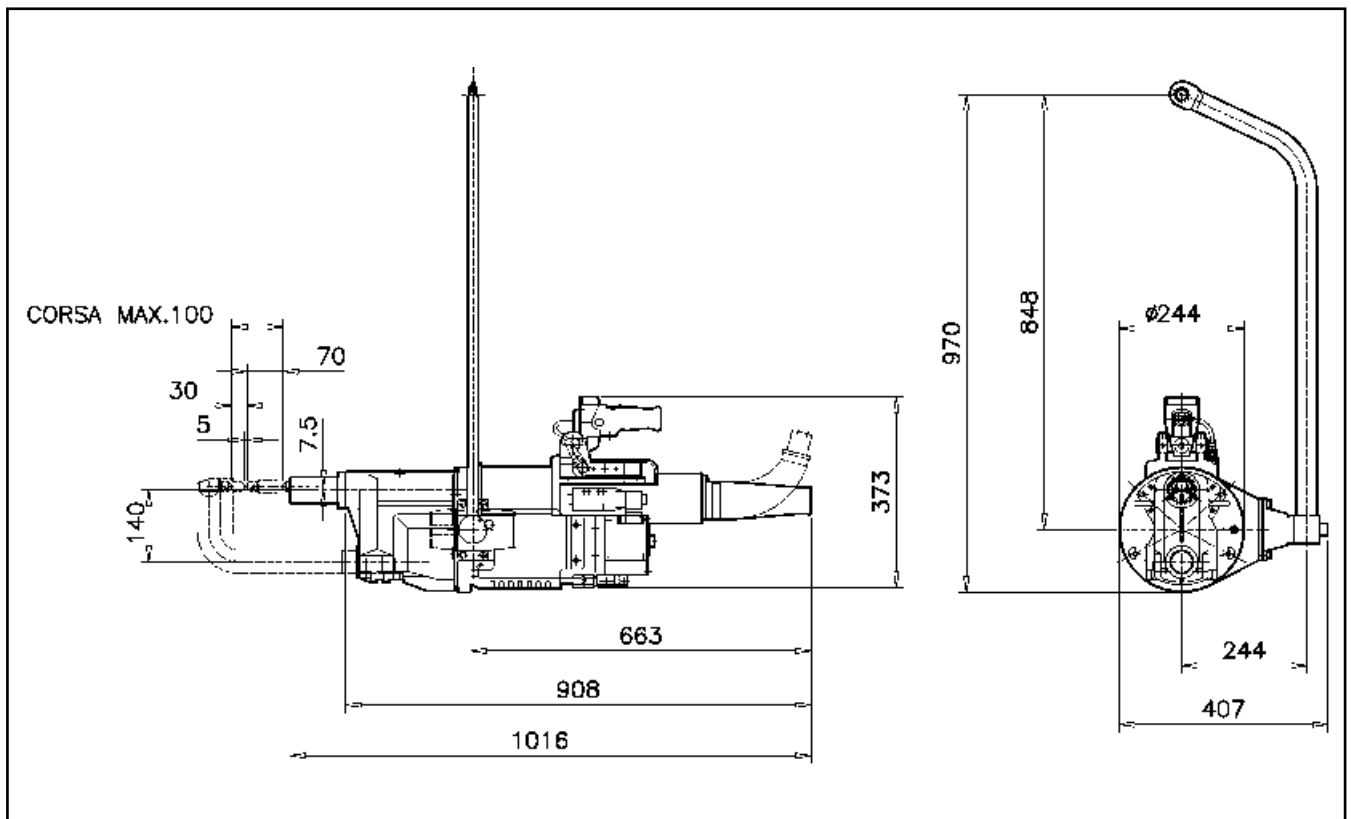
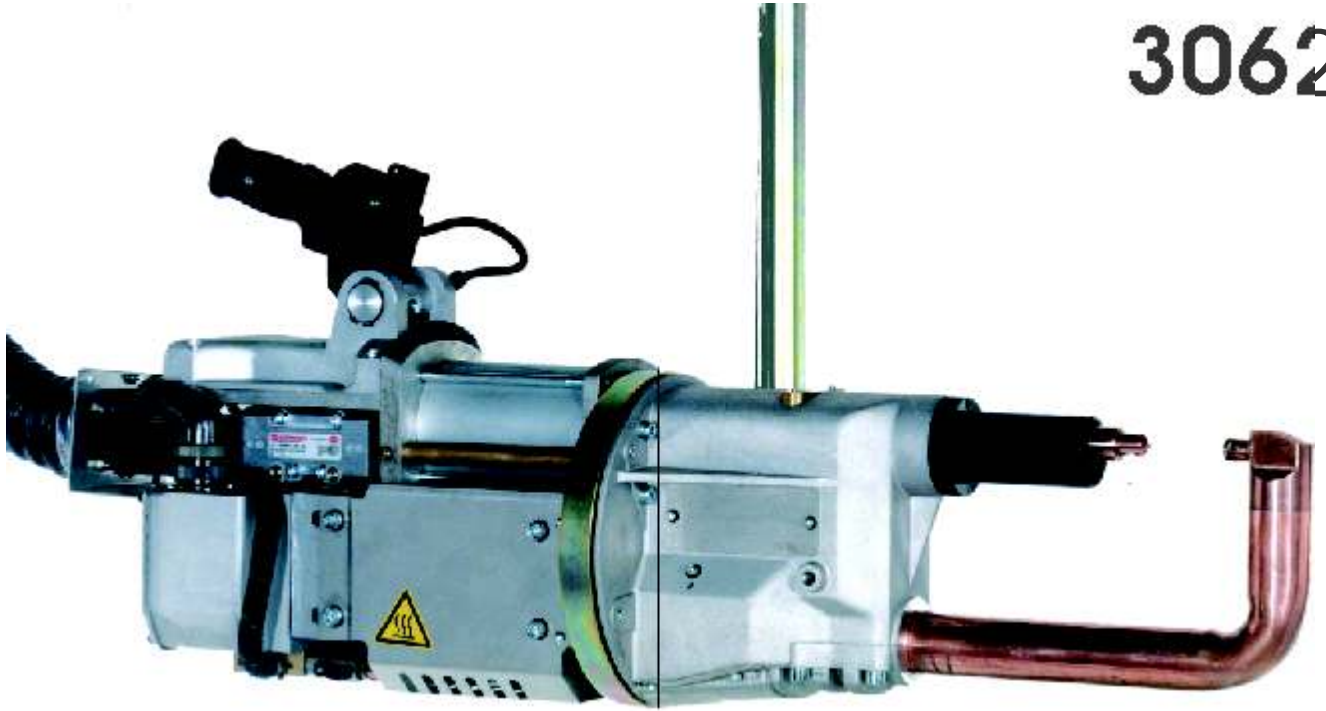


MF
3-PHASE INVERTER

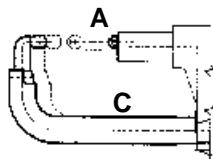
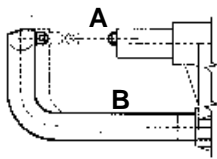
MEDIA FREQUENZA 1000 Hz
MEDIUM FREQUENCIES 1000 Hz
MITTELFREQUENZ 1000 Hz



3062



 BRACCI -
  ARMS -
  ARME



Art. / Item 3062

BRACCI - ARMS - ARME $\varnothing 45$ CP

L (mm)	A	B	C
	4401	4402	4403

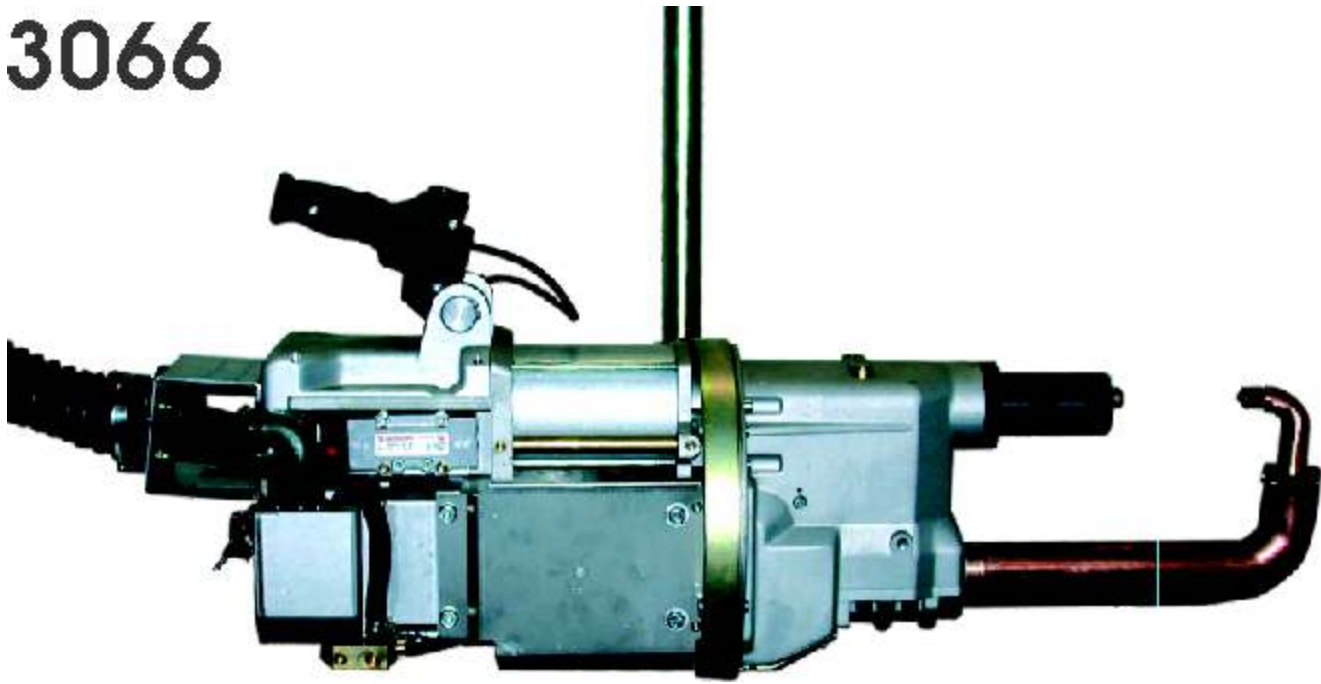
ARTICOLO ITEM ARTIKEL	POTENZA POWER LEISTUNG		INTERASSE GAP ACHSABST.	FORZA daN FORCE daN KRAFT daN		ALES. CILINDRO CYLIND. BORE BOHR.ZYLINDER	CORRENTE CC. SC. CURRENT STROM CC	DIAMETRO INNESTO BRACCI ARMS TAPER DURCHM.EINSATZ ARME		PESO NETTO NET WEIGHT GEWICHT NETTO
	kVA AL 20%	kVA AL 50%		MIN./MAX. mm	A 6 bar			A 8 bar	N.I. mm.	
3062	88	56	-	375	500	\varnothing 90	25	44	42	53

PESO NETTO CON SOSPENSIONE E SENZA BRACCI - NET WEIGHT WITH SUSPENSION AND WITHOUT ARMS - NETTO-GEWICHT MIT KUGELLAGERRUNDFÜHRUNG OHNE ARME

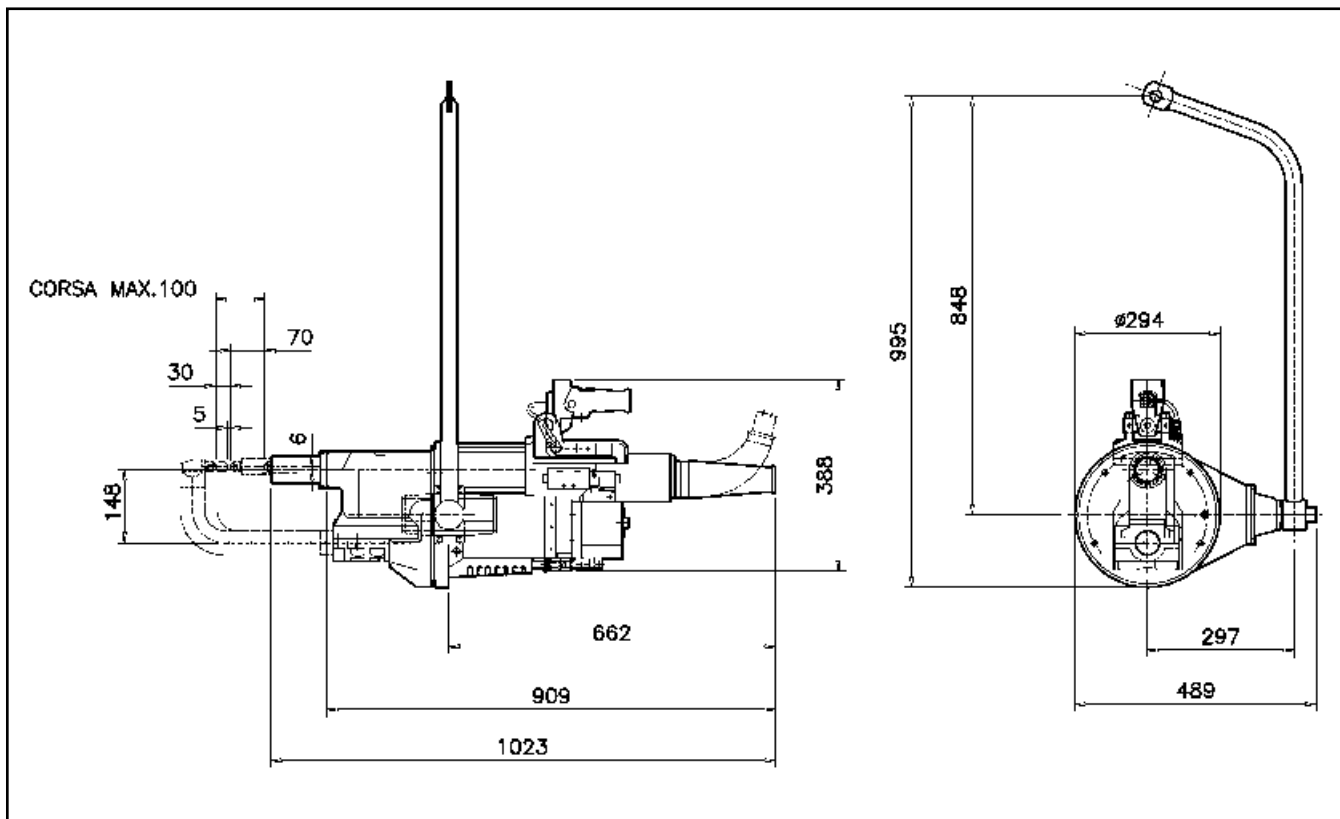
N.I.= NON ISOLATI - NOT INSULATED - NICHT ISOLIERT

I. = ISOLATI - INSULATED - ISOLIERT

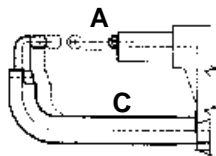
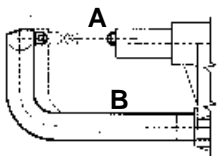
3066



2



BRACCI -
 ARMS -
 ARME

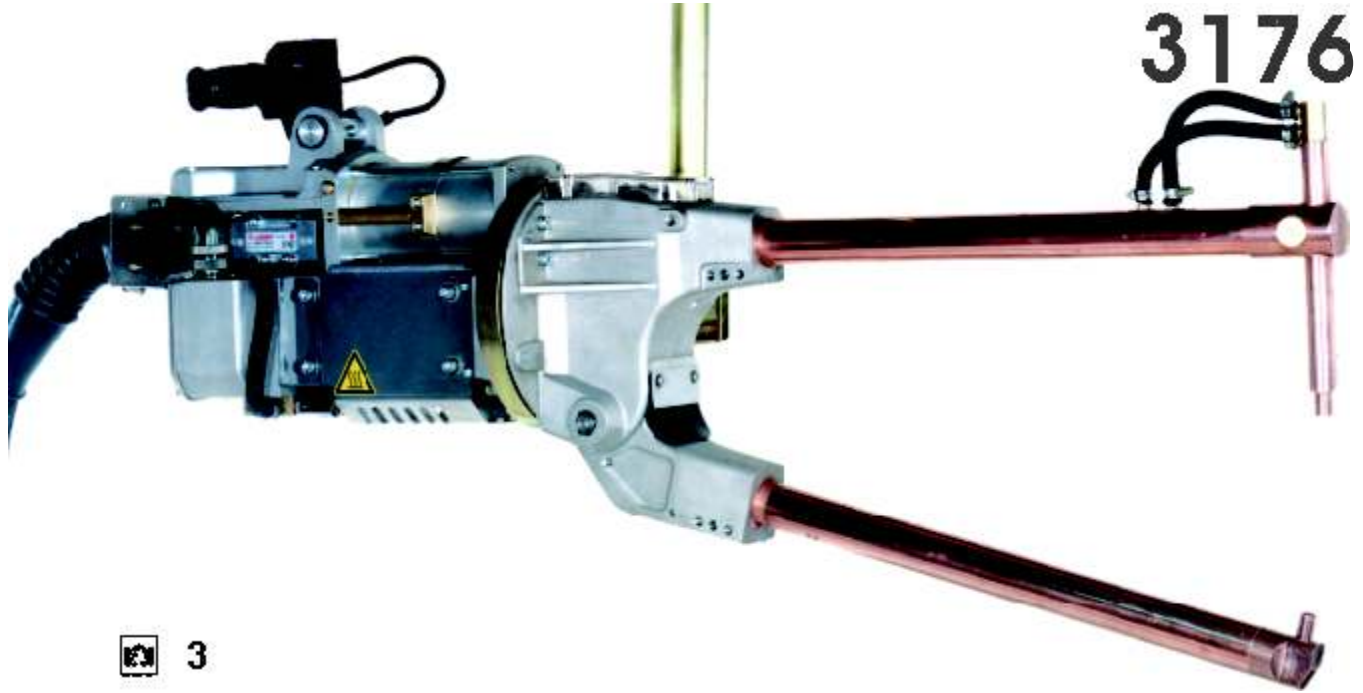


Art. / Item 3066			
BRACCI - ARMS - ARME Ø 50 CG			
L (mm)	A	B	C
	4410	4411	4412

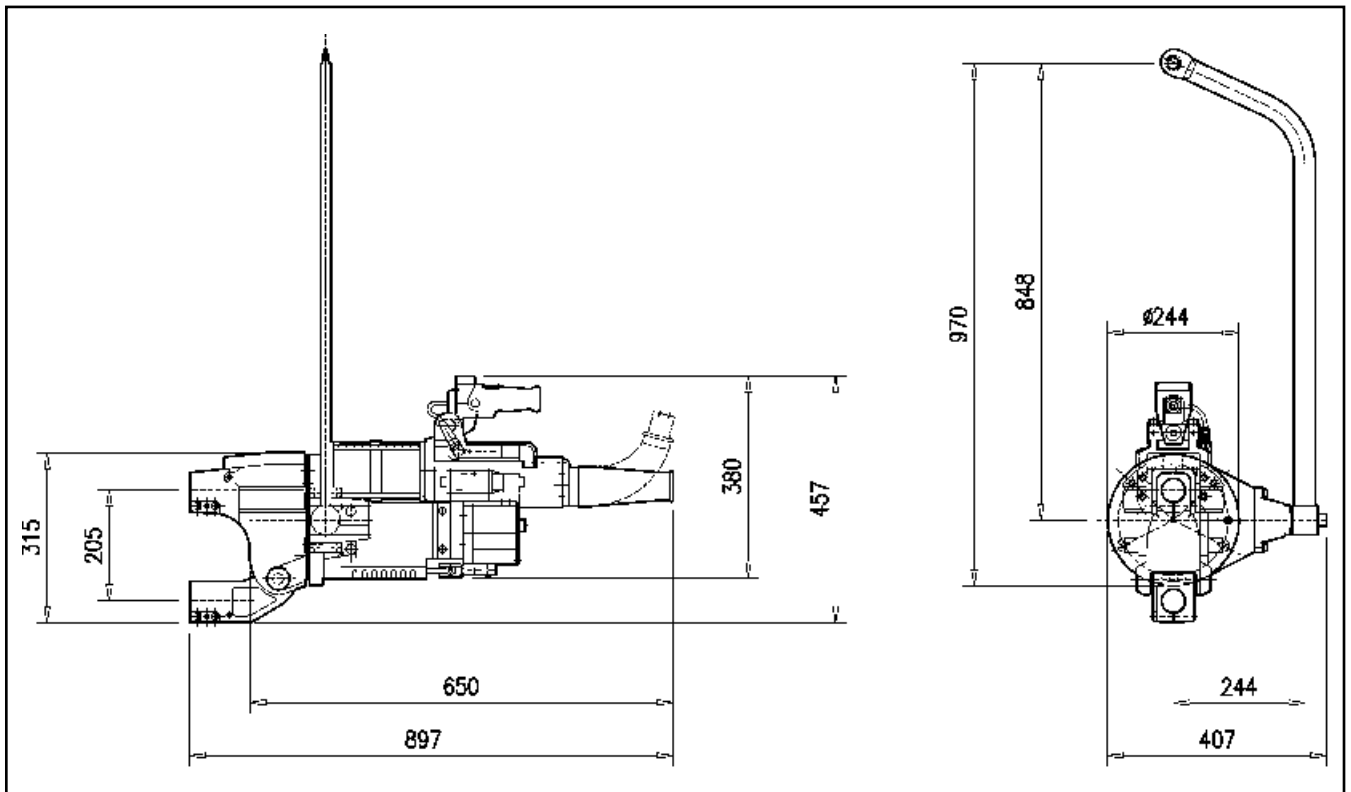
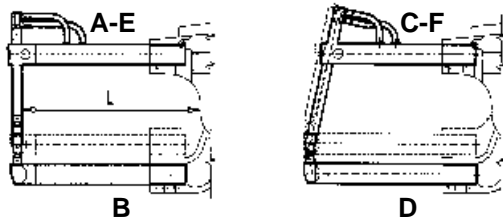
ARTICOLO ITEM ARTIKEL	POTENZA POWER LEISTUNG		INTERASSE GAP ACHSABST.	FORZA daN FORCE daN KRAFT daN		ALES. CILINDRO CYLIND. BORE BOHR.ZYLINDER	CORRENTE CC. SC. CURRENT STROM CC	DIAMETRO INNESTO BRACCI ARMS TAPER DURCHM.EINSATZ ARME		PESO NETTO NET WEIGHT GEWICHT NETTO
	kVA AL 20%	kVA AL 50%	MIN./MAX. mm	A 6 bar	A 8 bar	Ø mm.	kA	N.I. mm.	I. mm.	kg
3066	142	90	-	465	620	100	30	49	47	63
PESO NETTO CON SOSPENSIONE E SENZA BRACCI - NET WEIGHT WITH SUSPENSION AND WITHOUT ARMS - NETTO-GEWICHT MIT KUGELLAGERRUNDFÜHRUNG OHNE ARME										
N.I.= NON ISOLATI - NOT INSULATED - NICHT ISOLIERT						I. = ISOLATI - INSULATED - ISOLIERT				

3062-3066

C-TYPE



3176

 3

 BRACCI -  ARMS -  ARME


BRACCI - ARMS - ARME Ø 45 L / LL

L (mm)	A	B	C	D	E	F	F (6 bar) daN	F (8 bar) daN	Ø 45/kg
190	4460	4464*	4461	4465*	**	**	340	450	~5,3
250	4466	4470	4467	4471	4468	4469	270	360	~6,4
350	4472	4476	4473	4477	4474	4475	200	270	~8,3
508	4478	4482	4479	4483	4480	4481	150	195	~11,5
650	4484	4488	4485	4489	4486	4487	115	155	~14,2
800	4490	4494	4491	4495	**	**	95	130	~17

* SOLO PER L - ** NON PREVISTI / * FOR "L" ARMS ONLY - ** NOT AVAILABLE / * NUR FÜR "L" ARME - ** NICHT VORGESEHEN

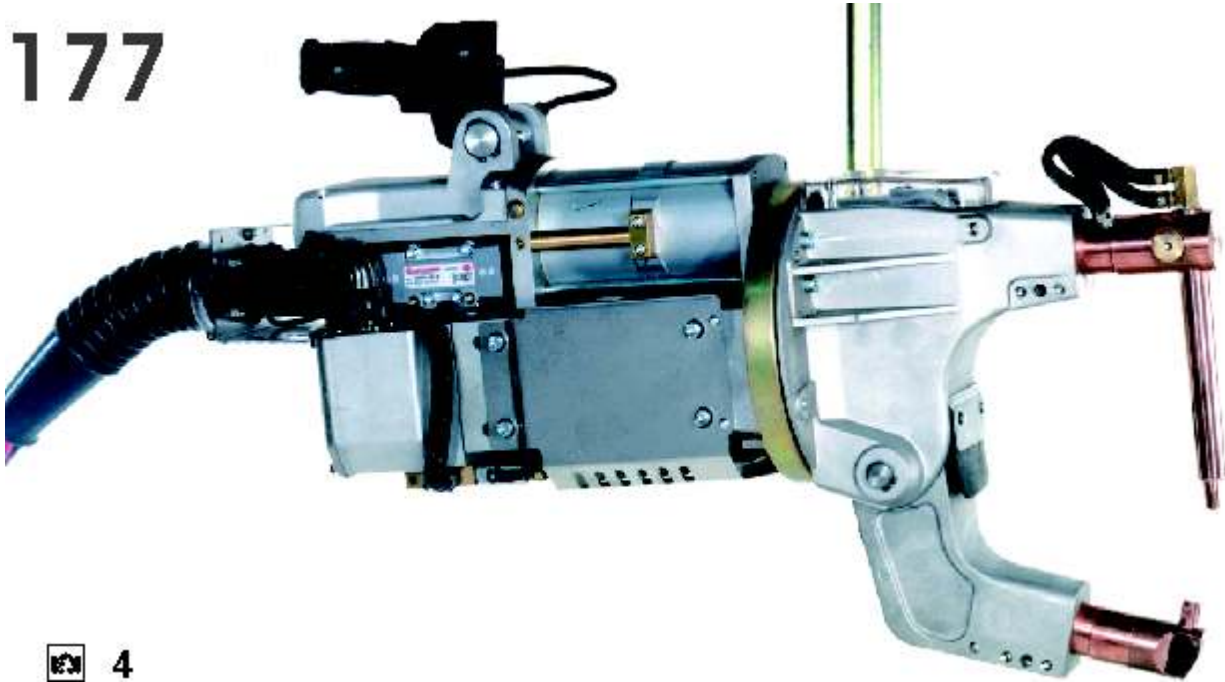
ARTICOLO ITEM ARTIKEL	POTENZA POWER LEISTUNG		INTERASSE GAP ACHSABST.	FORZA daN FORCE daN KRAFT daN		ALES. CILINDRO CYLIND. BORE BOHR.ZYLINDER	CORRENTE CC. SC. CURRENT STROM CC	DIAMETRO INNESTO BRACCI ARMS TAPER DURCHM.EINSATZ ARME		PESO NETTO NET WEIGHT GEWICHT NETTO
	kVA AL 20%	kVA AL 50%	MIN/MAX. mm	A 6 bar	A 8 bar	Ø mm.	kA	N.I. mm.	I. mm.	kg
3176	88	56	205/205	340	450	100	25	44	42	55

PESO NETTO CON SOSPENSIONE E SENZA BRACCI - NET WEIGHT WITH SUSPENSION AND WITHOUT ARMS - NETTO-GEWICHT MIT KUGELLAGERRUNDFÜHRUNG OHNE ARME

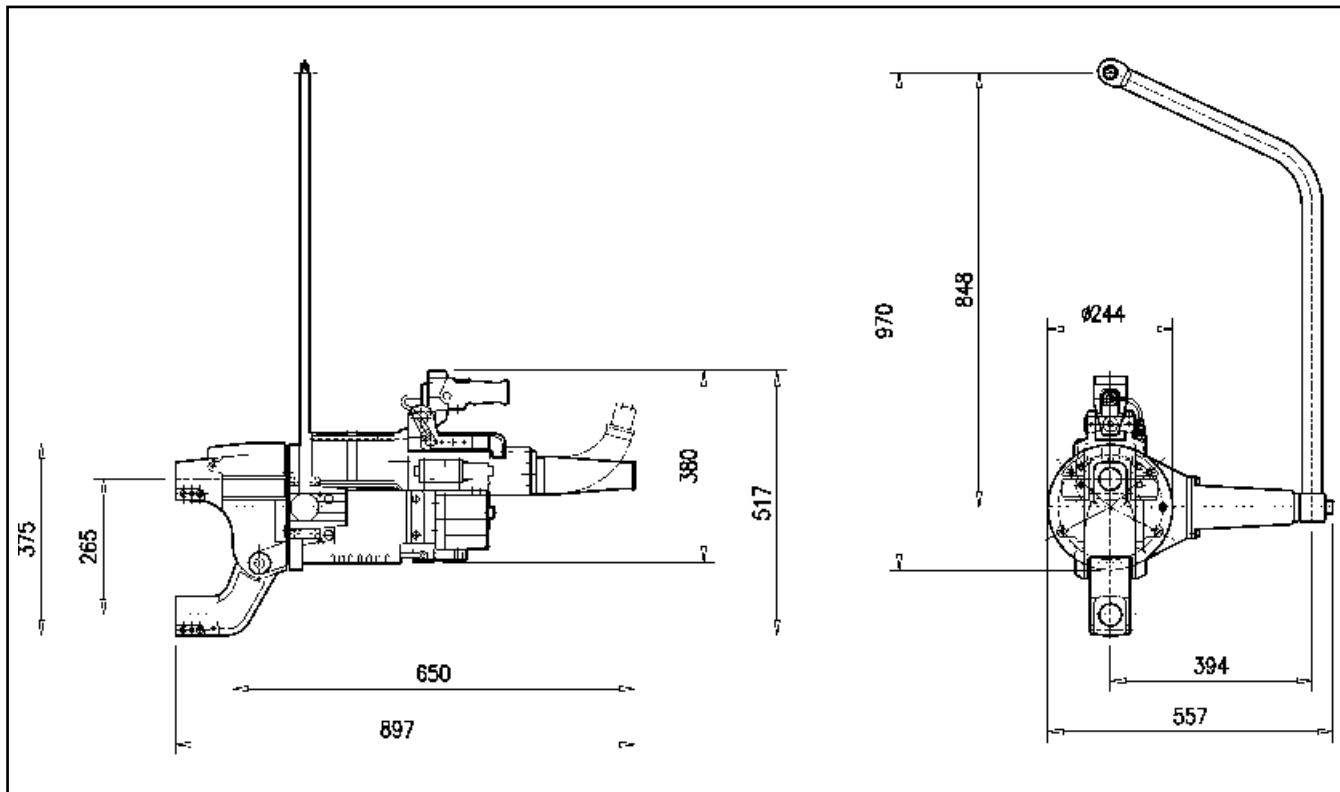
N.I.= NON ISOLATI - NOT INSULATED - NICHT ISOLIERT

I. = ISOLATI - INSULATED - ISOLIERT

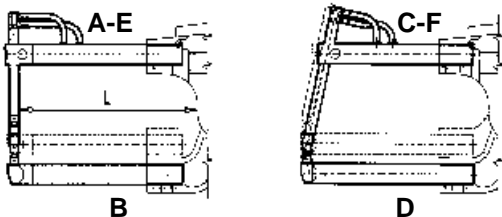
3177



4



BRACCI -
 ARMS -
 ARME



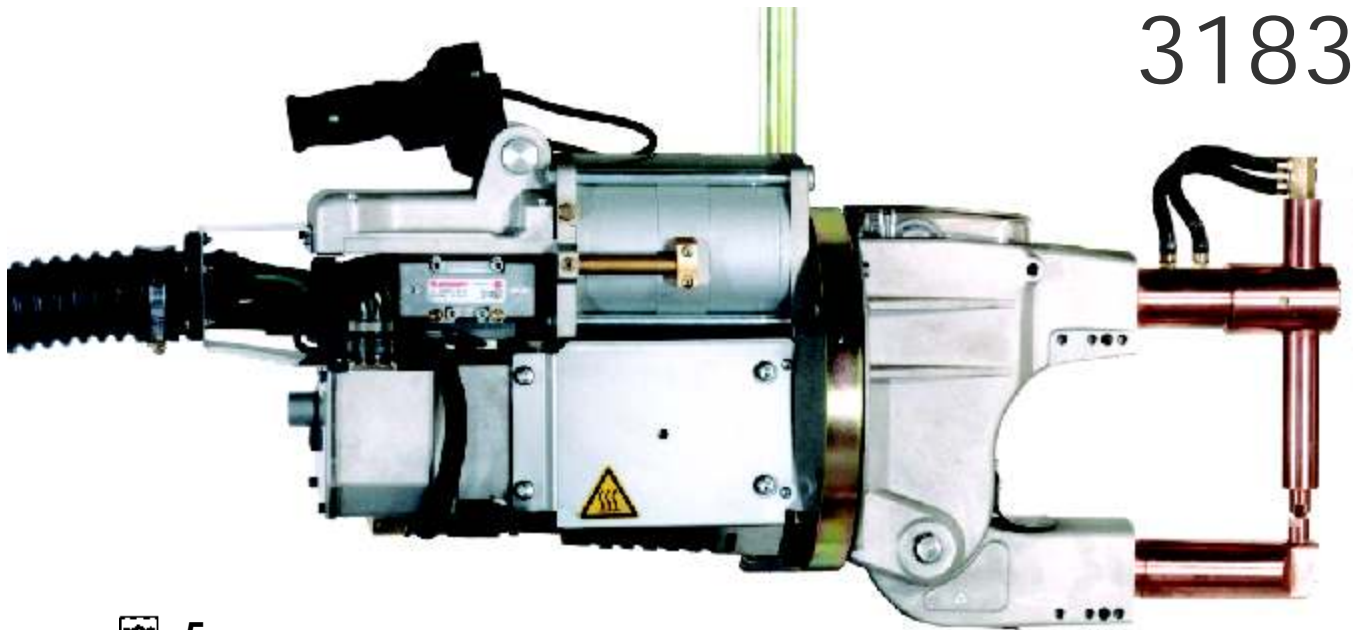
BRACCI - ARMS - ARME Ø 45 L / LL									
L (mm)	A	B	C	D	E	F	F (6 bar) daN	F (8 bar) daN	Ø 45/kg
190	4460	4464*	4461	4465*	**	**	340	450	~5,3
250	4466	4470	4467	4471	4468	4469	270	360	~6,4
350	4472	4476	4473	4477	4474	4475	200	270	~8,3
508	4478	4482	4479	4483	4480	4481	150	195	~11,5
650	4484	4488	4485	4489	4486	4487	115	155	~14,2
800	4490	4494	4491	4495	**	**	95	130	~17

* SOLO PER L - ** NON PREVISTI / * FOR "L" ARMS ONLY - ** NOT AVAILABLE / * NUR FÜR "L" ARME - ** NICHT VORGESEHEN

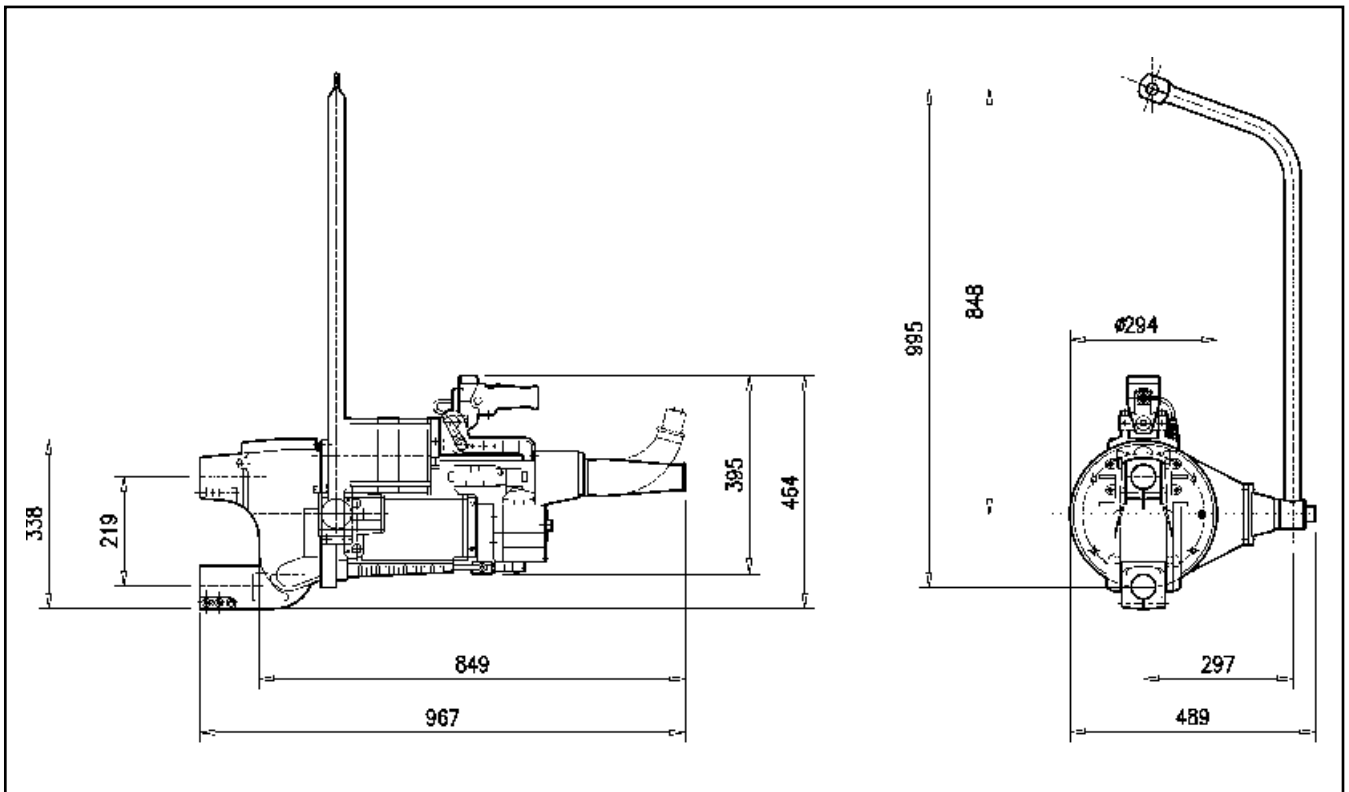
ARTICOLO ITEM ARTIKEL	POTENZA POWER LEISTUNG		INTERASSE GAP ACHSABST.	FORZA daN FORCE daN KRAFT daN		ALES. CILINDRO CYLIND. BORE BOHR.ZYLINDER	CORRENTE CC. SC. CURRENT STROM CC	DIAMETRO INNESTO BRACCI ARMS TAPER DURCHM.EINSATZ ARME		PESO NETTO NET WEIGHT GEWICHT NETTO
	kVA AL 20%	kVA AL 50%		MIN./MAX. mm	A 6 bar			A 8 bar	Ø mm.	
3177	88	56	265/265	340	450	100	25	44	42	55,5

PESO NETTO CON SOSPENSIONE E SENZA BRACCI - NET WEIGHT WITH SUSPENSION AND WITHOUT ARMS - NETTO-GEWICHT MIT KUGELLAGERRUNDFÜHRUNG OHNE ARME
 N.I.= NON ISOLATI - NOT INSULATED - NICHT ISOLIERT | I. = ISOLATI - INSULATED - ISOLIERT

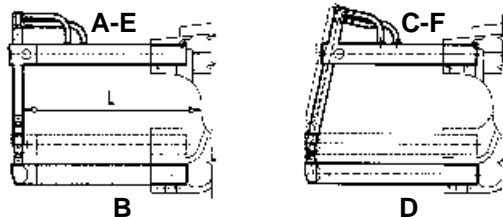
3183



5



BRACCI -
 ARMS -
 ARME



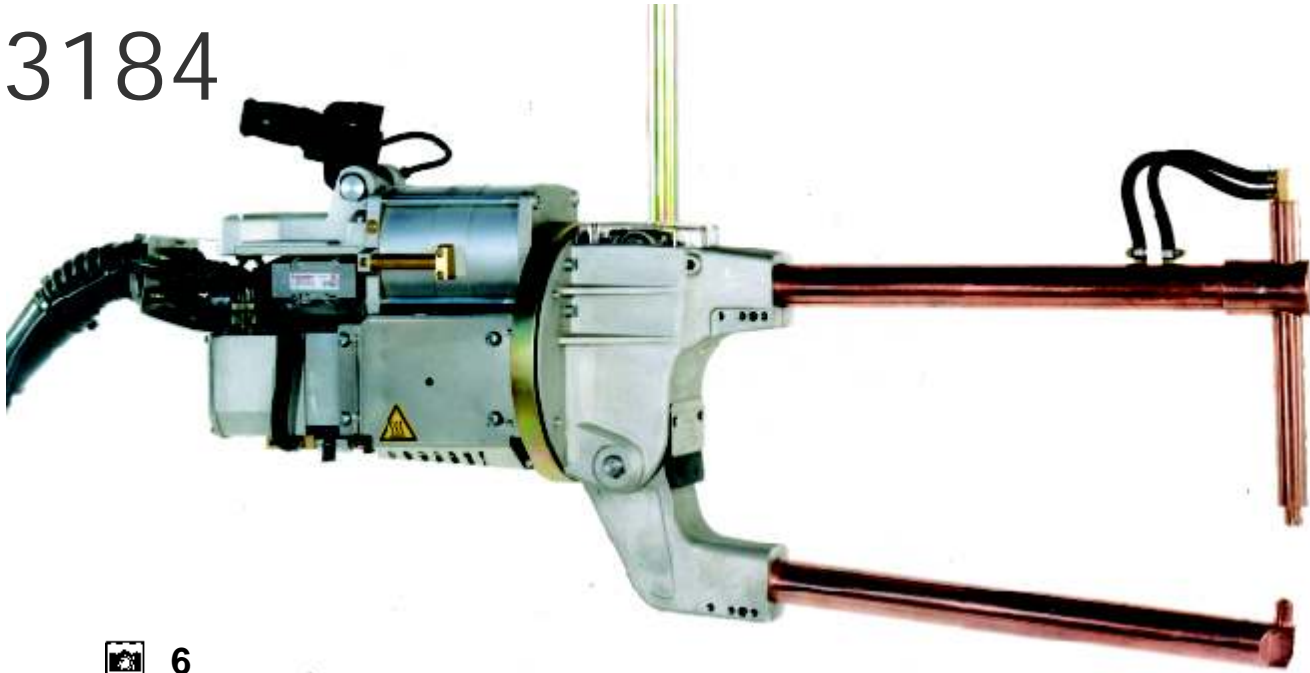
Art. / Item 3183 - 3184									
BRACCI - ARMS - ARME Ø 50 L / LL									
L (mm)	A	B	C	D	E	F	F (6 bar) daN	F (8 bar) daN	Ø 50/kg
255	4420	4424*	**	**	4422	**	645	855	~9
408	4426	4430	4427	4431	4428	4429	430	575	~13
610	4432	4436	4433	4437	4434	4435	300	400	~17
820	4438	4442	4439	4443	4440	4441	230	305	~22
1030	4444	4448	**	**	4446	**	185	245	~28

* SOLO PER L - ** NON PREVISTI / * FOR "L" ARMS ONLY - ** NOT AVAILABLE / * NUR FÜR "L" ARME - ** NICHT VORGESEHEN

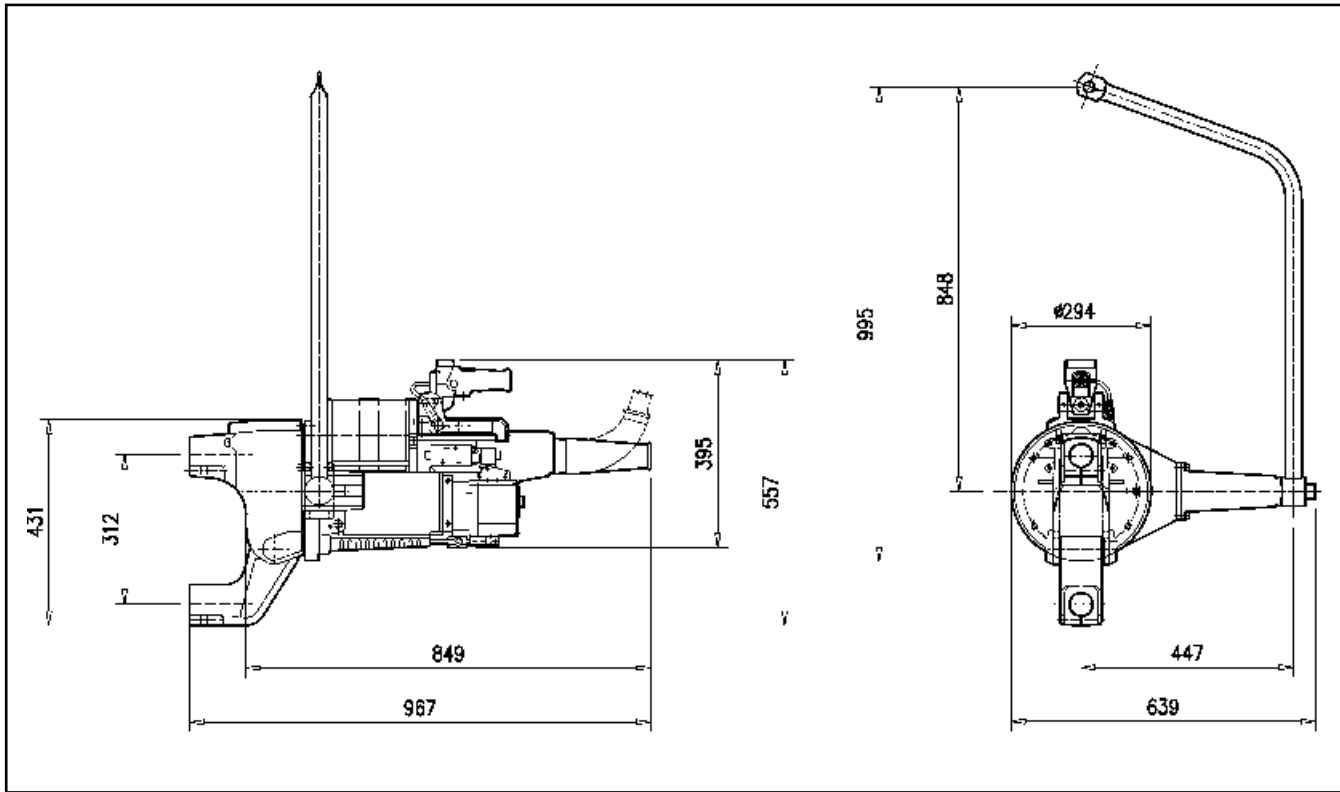
ARTICOLO ITEM ARTIKEL	POTENZA POWER LEISTUNG		INTERASSE GAP ACHSABST.	FORZA daN FORCE daN KRAFT daN		ALES. CILINDRO CYLIND. BORE BOHR.ZYLINDER	CORRENTE CC. SC. CURRENT STROM CC	DIAMETRO INNESTO BRACCI ARMS TAPER DURCHM.EINSATZ ARME		PESO NETTO NET WEIGHT GEWICHT NETTO
	kVA AL 20%	kVA AL 50%		MIN./MAX. mm	A 6 bar			A 8 bar	Ø mm.	
3183	142	90	219/219	645	855	140	30	49	47	75

PESO NETTO CON SOSPENSIONE E SENZA BRACCI - NET WEIGHT WITH SUSPENSION AND WITHOUT ARMS - NETTO-GEWICHT MIT KUGELLAGERRUNDFÜHRUNG OHNE ARME
 N.I.= NON ISOLATI - NOT INSULATED - NICHT ISOLIERT | I. = ISOLATI - INSULATED - ISOLIERT

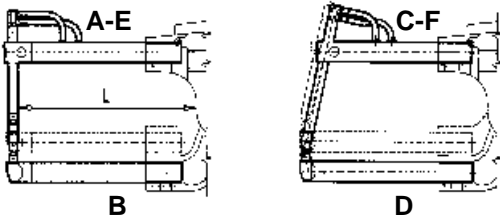
3184



6



BRACCI - ARMS - ARME



Art. / Item 3183 - 3184										
BRACCI - ARMS - ARME Ø 50 L / LL										
L (mm)	A	B	C	D	E	F	F (6 bar) daN	F (8 bar) daN	Ø 50/kg	
255	4420	4424*	**	**	4422	**	645	855	~9	
408	4426	4430	4427	4431	4428	4429	430	575	~13	
610	4432	4436	4433	4437	4434	4435	300	400	~17	
820	4438	4442	4439	4443	4440	4441	230	305	~22	
1030	4444	4448	**	**	4446	**	185	245	~28	

* SOLO PER L - ** NON PREVISTI / * FOR "L" ARMS ONLY - ** NOT AVAILABLE / * NUR FÜR "L" ARME - ** NICHT VORGESEHEN

ARTICOLO ITEM ARTIKEL	POTENZA POWER LEISTUNG		INTERASSE GAP ACHSABST.	FORZA daN FORCE daN KRAFT daN		ALES. CILINDRO CYLIND. BORE BOHR.ZYLINDER	CORRENTE CC. SC. CURRENT STROM CC	DIAMETRO INNESTO BRACCI ARMS TAPER DURCHM.EINSATZ ARME		PESO NETTO NET WEIGHT GEWICHT NETTO
	kVA AL 20%	kVA AL 50%		MIN./MAX. mm	A 6 bar			A 8 bar	Ø mm.	
3184	142	90	312/312	645	855	140	30	49	47	76

PESO NETTO CON SOSPENSIONE E SENZA BRACCI - NET WEIGHT WITH SUSPENSION AND WITHOUT ARMS - NETTO-GEWICHT MIT KUGELLAGERRUNDFÜHRUNG OHNE ARME

N.I.= NON ISOLATI - NOT INSULATED - NICHT ISOLIERT | I. = ISOLATI - INSULATED - ISOLIERT

3183-3184



 7



ARMADIO DI CONTROLLO PER SALDATRICIA A MEDIA FREQUENZA

L'armadio di controllo, che comanda la saldatrice a media frequenza, integra l'inverter, il controllo di saldatura TE710, i dispositivi di protezione e sicurezza. Sono disponibili diverse taglie, dipendentemente dalla potenza della saldatrice.

CONTROLLO DI SALDATURA TE710

Programmazione semplificata con display alfanumerico LCD con messaggi nella lingua selezionata dall'utilizzatore. 300 programmi di saldatura memorizzabili, 16 dei quali richiamabili direttamente dall'esterno.

6 modalità di funzionamento: Corrente Costante, Potenza Costante, Tensione Costante, FIX, Energia Costante, DYNAMIC mode. Limiti in: Corrente, Tensione agli elettrodi, Energia, Potenza, Percentuale di utilizzo dell'inverter, Resistenza iniziale e finale del materiale da saldare; limite sullo spessore e sull'indentazione del materiale (opzionale).

Regolazione dei tempi di saldatura in millesimi di secondo.

Chiave asportabile per il blocco della programmazione.



CONTROL CABINET FOR MEDIUM FREQUENCY WELDERS

The control cabinet, which controls the medium frequency welder, integrates the inverter, the welding control unit TE710, the protection and safety devices. There are different sizes available, depending on the power of the welder.

WELDING CONTROL UNIT TE710

Easy programming with LCD alphanumeric display showing messages in the language selected by user.

300 welding programs recordable, 16 programs directly selectable from external device

6 functions modes: constant current, constant power, constant voltage, FIX, constant energy, DYNAMIC mode

Limits in: current, voltage at the electrodes, energy, power, percentage of utilization of the inverter, initial and final resistance of the material welded, limit on the thickness and on the indentation of the material (optional)

Adjustment of the welding time in thousands of a second.

Removable key for programming lock.



STEUERUNGSSCHRANK FÜR MITTELFREQUENZSCHWEISSMASCHINEN

Der Steuerungsschrank, der die Mittelfrequenz-Schweissmaschine steuert, integriert den Inverter, die Schweiss-Steuerung Te710, die Schutz- u. Sicherheitsvorrichtungen. Es gibt je nach Leistung der Schweissmaschine verschiedene Grössen.

SCHWEISS-STEUERUNG TE 710

Vereinfachte Programmierung mit alphanumerischem Display LCD mit Anzeige in der vom Bediener gewählten Sprache.

300 speicherbar Schweissprogramme, davon 16 direkt extern abrufbar.

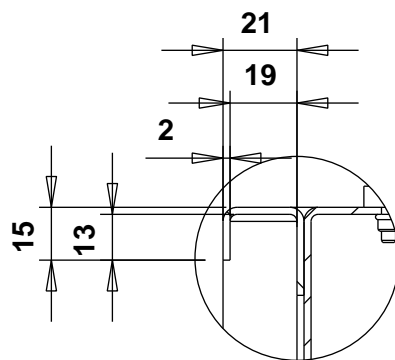
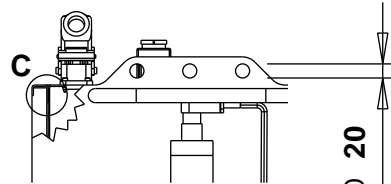
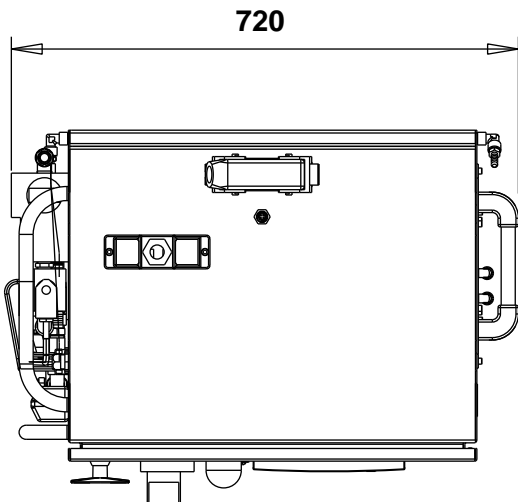
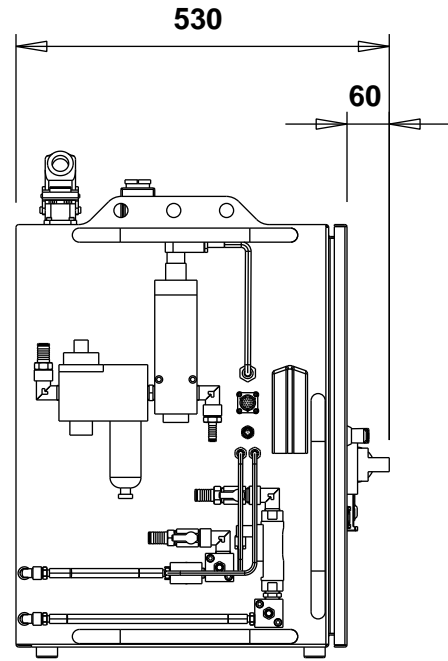
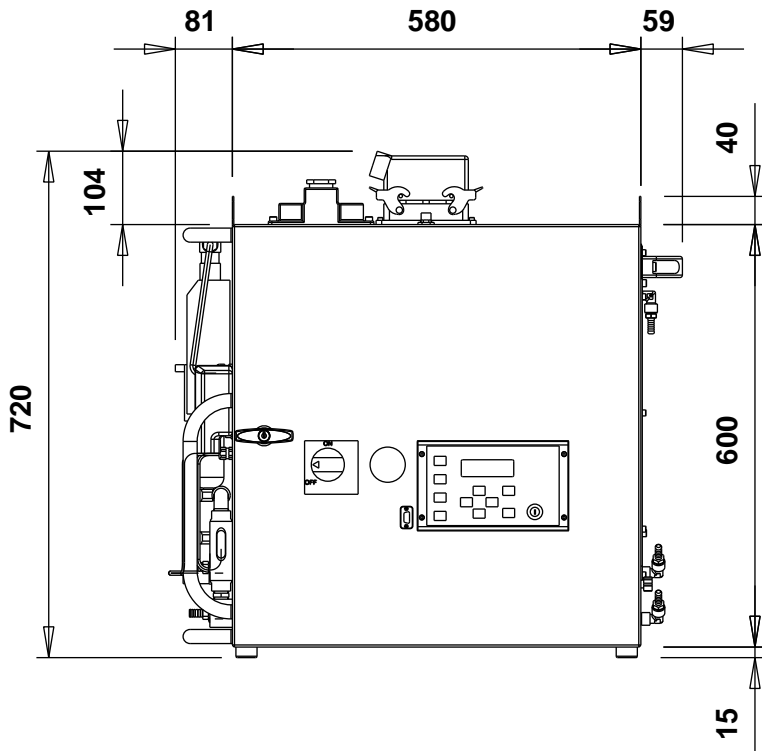
6 Funktionsmodalitäten: Konstantstrom, Konstantleistung, Konstantspannung, FIX, Konstantenergie, Modalität DYNAMIC

Grenzwerte für: Strom, Spannung an den Elektroden, Leistung, prozentuale Anwendung des Inverters, Anfangs- u. Endwiderstand des zu schweisenden; Materials, Grenzwert bezüglich Dicke und Eindringtiefe des Materials (Option).

Schweissung mit drei verschiedenen Einstellungsfolgen, um gewünschte Stromprofile zu erreichen.

Zähler der ausgeführten Schweissungen und Programmiermöglichkeit der auszuführenden Punkteanzahl.

1553/W - 1554/W



n° (3+3) Ø 20

DETTAGLIO C

9366-9367



2000 mm

10÷105 kg



9

9405



2500 mm
3000 mm

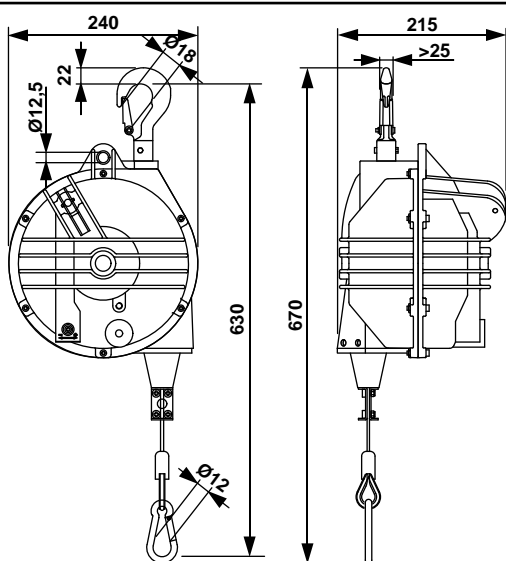
15÷60 kg



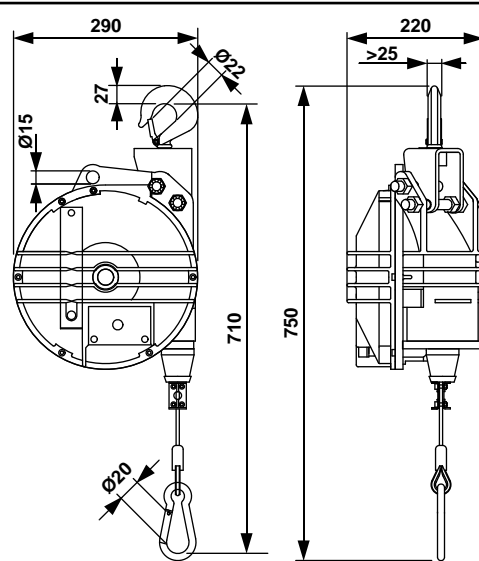
10

OPZIONE B
OPTION B
OPCION B
OPTIE B

OPZIONE RI
OPTION RI
OPCION RI
OPTIE RI





9366-9367

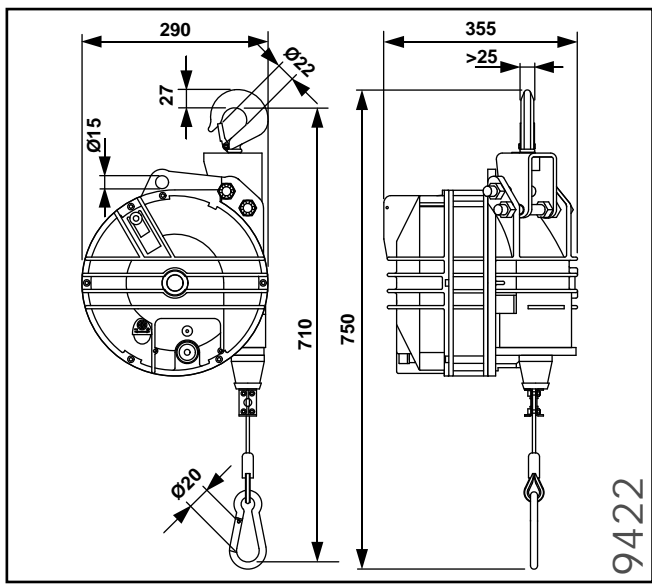
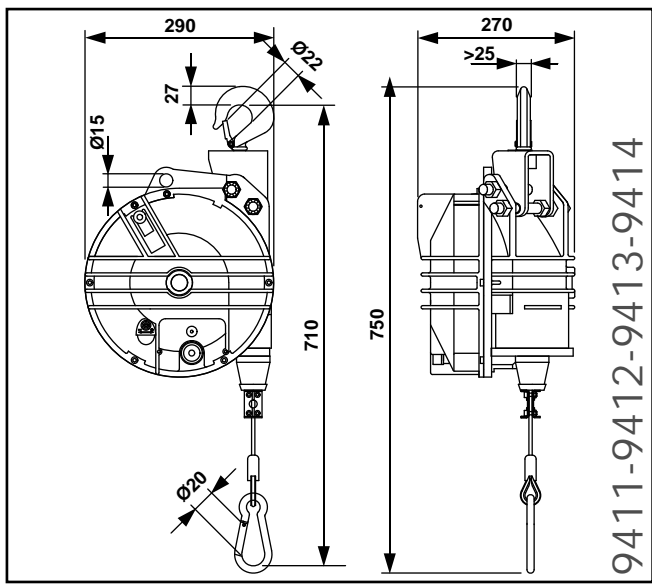
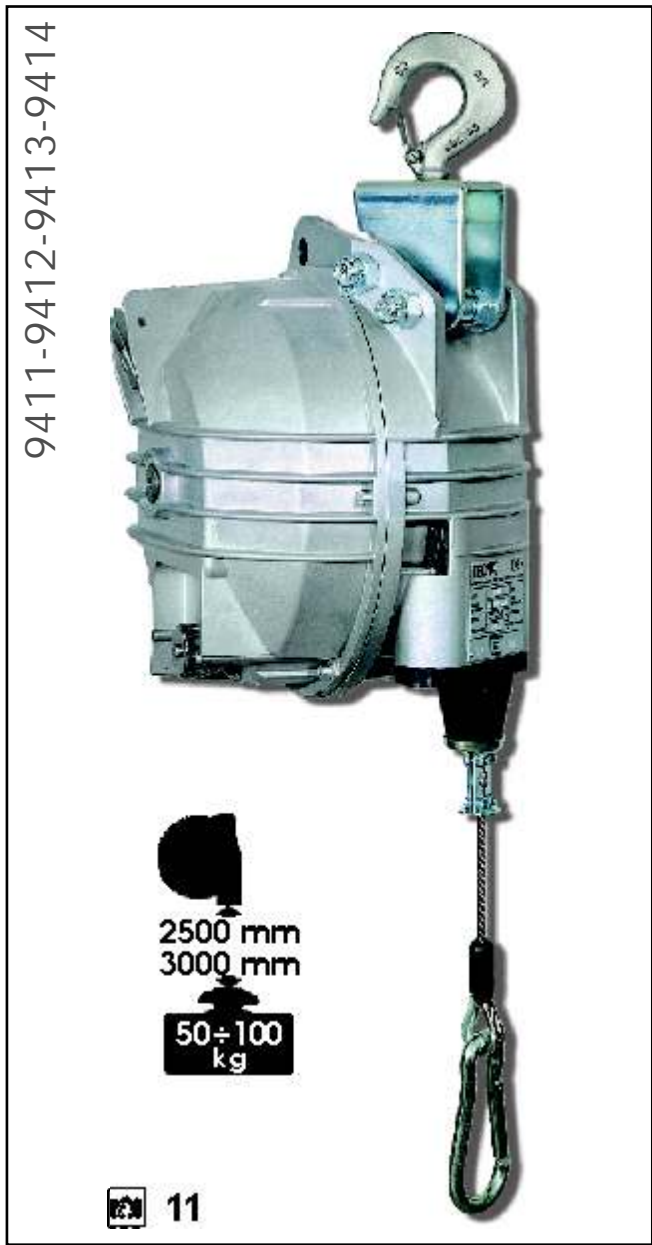


9405



 DATI E CARATTERISTICHE TECNICHE -
  DATA AND FEATURES -
  TECHNISCHE DATEN

Art.-Item	9366	9367	9405
	35÷45	45÷55	50÷60
	12,4	12,5	25,4

9366-9367-9405



 DATI E CARATTERISTICHE TECNICHE -
  DATA AND FEATURES -
  TECHNISCHE DATEN

Art.-Item	9411	9412	9413	9414	9422
	60 ÷ 70	70 ÷ 80	80 ÷ 90	90 ÷ 100	100 ÷ 120
	26,8	27,8	28,8	30	38,7

9411-9412-9413-9414-9422

Art./Item 3101 (L-LL-C) Art./Item 3102 (LG-LLG-CG)



 13



Supporto per montare l'impugnatura di comando sul lato inferiore della puntatrice pensile.



Holder to mount the control handle on the lower side of the spot gun.



Halterung für Montage des Schaltgriffes auf der Unterseite der Zange.

Art./Item 3103 (L-LL-C) Art./Item 3104 (LG-LLG-CG)



 14



Supporto per montare l'impugnatura di comando su un lato della puntatrice pensile, completo di seconda impugnatura.



Holder to mount the control handle on a spot gun side, complete with another handle.



Halterung für Montage des schaltgriffes seitlich der Zange, komplett mit zweitem Griff.

TECNA®